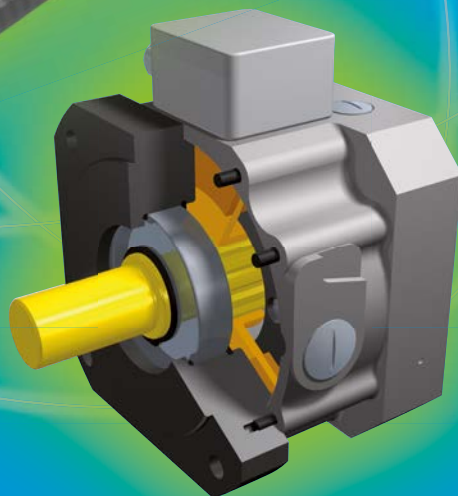
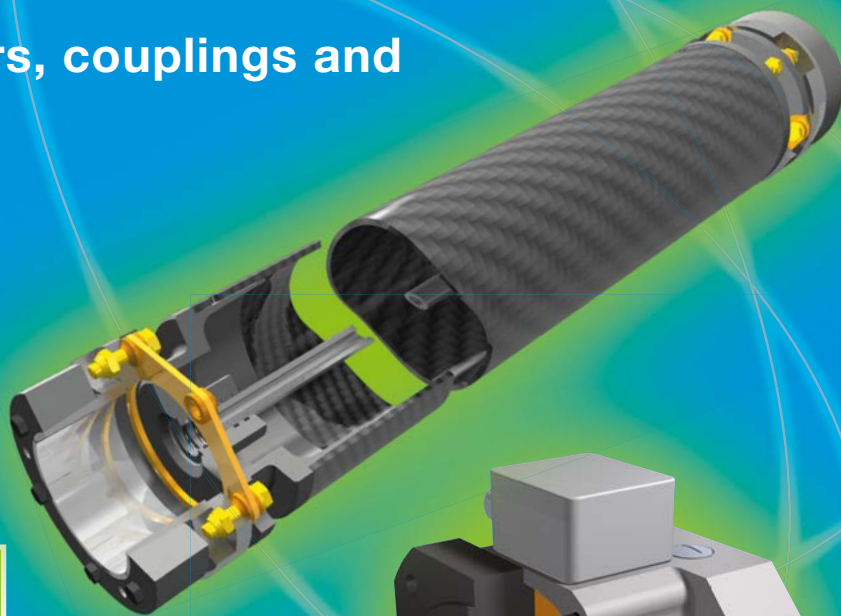




*your reliable partner*

## Machine Tool Components

Torque limiters, couplings and  
safety brakes



## A Worldwide Presence

Our Sales and Service network is constantly expanding. We guarantee you and your customers local representation almost all over the world. With eight branch firms in France, Switzerland, Italy, England, Poland, the USA, Singapore and China as well as around 30 representatives and eight subsidiaries in Germany, we provide local service for our customers in all important industrial areas.



## Total Quality Management

### Product Quality

Every delivery which leaves our firm has been subjected to a careful quality inspection, meaning that you are able to rely 100 % on **mayr**<sup>®</sup> products. If required, we pre-adjust our clutches and brakes accurately to the requested values and confirm the product characteristics with an Inspection Report.

### Quality Management

**mayr**<sup>®</sup> uses the term quality to describe its products and services. Certification of our quality management confirms the quality-consciousness of our colleagues at every level of the company.

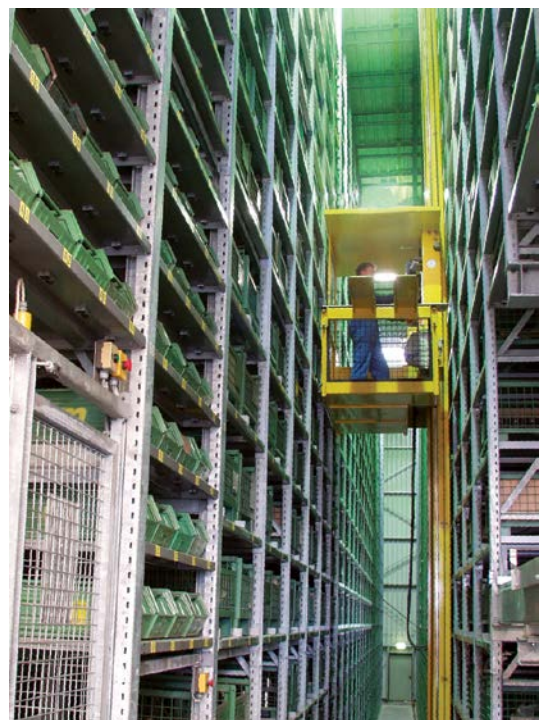
Our integrated management system is certified according to **DIN EN ISO 9001:2000 (Quality)** and **DIN EN ISO 14001 (Environment)** and complies with the **OHSAS 18001/OHRIS (Occupational Health and Safety)** demands.



## Individual and Flexible Logistics

Flexible and optimally qualified colleagues ensure that your order is delivered according to schedule and with the most appropriate delivery method. We take into account your individual packaging and dispatch regulations as a matter of course. Our modern high rack warehouse has a permanently available stock of our wide standard product selection.

And if you are really in a hurry, simply use our uniquely-quick basic product delivery service!





## Construction and Development

### Innovations for Your Success

With our innovative and economical solutions, we are able to set new records in the field of power transmission. Our many worldwide patents prove our constant ambition to develop better and technologically superior products.

Highly qualified engineers, high-performance 3D-CAD-systems and the most up-to-date FEM calculation aids used in our Development and Construction departments mean that our business is perfectly equipped to offer our customers effective solutions.

### Experts for all Power Transmission Questions

Exploit our know-how, gained by decades of experience in the development, production and application of power transmission products. Our experts in Construction and Development are happy to advise you personally and competently when selecting and dimensioning the drive solution you require.

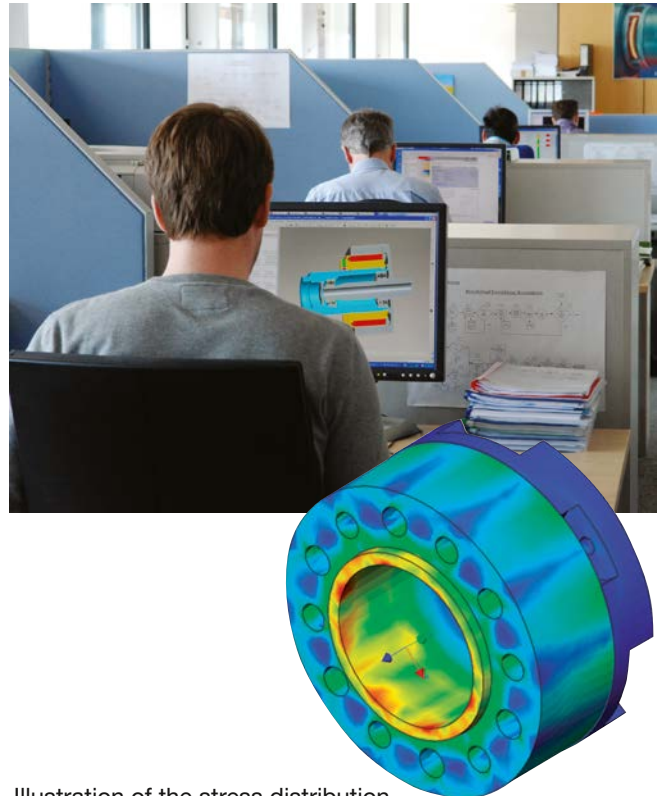


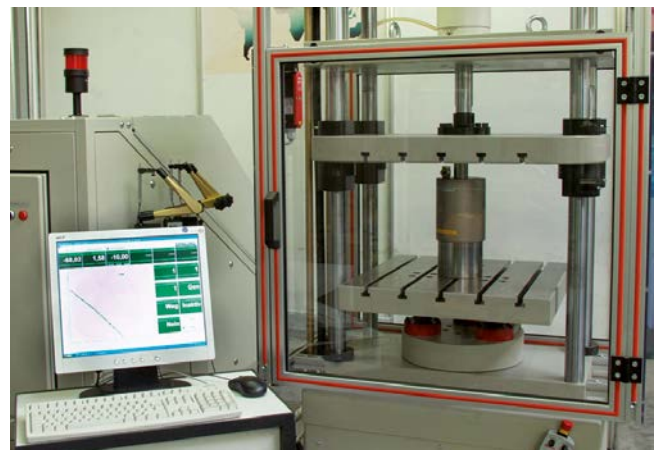
Illustration of the stress distribution in a backlash-free connection

## From Prototype to Finished Product

***No mayr® product is released onto the market until it has proved its functional capabilities and reliability in extreme, long-term tests.***

The spectrum of testing stands is as varied as our range of products:

- ☐ Friction work test stands
- ☐ Wear test stands
- ☐ Noise measurement room with highly accurate noise measurement inspection devices
- ☐ Torque inspection stands up to 200.000 Nm
- ☐ Impact and alternating load test stands
- ☐ Force test stands
- ☐ Linear movement test stands
- ☐ Continuous performance test stands
- ☐ Magnetic flux measurement test stands
- ☐ High-speed test stands up to 20.000 rpm
- ☐ Misalignment and angular misalignment test stands
- ☐ Load and measurement test stands for DC motors



## Product Data: Our 24-hour Service

Our website offers you detailed information 24 hours per day, 365 days per year with no delays. Here you can find not only the latest catalogues and technical documentation but also CAD-files for cost-saving construction of our products.

## Unsurpassed - Our Standard Program

For safety clutches, safety brakes, backlash-free shaft couplings and high-quality DC drives, we offer you a complete product range with market and branch optimised constructions and designs.

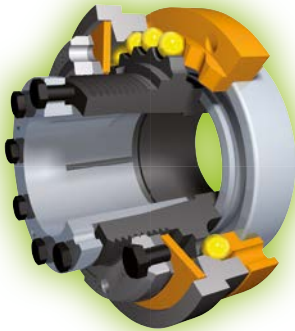
## Machine Tool Components

### Torque limiting clutches

#### EAS<sup>®</sup>-Compact<sup>®</sup>

*Perfect overload protection in a wide range of product variants*

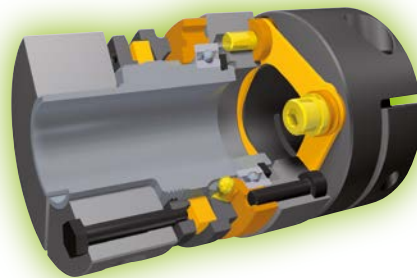
- Torque range from 0,65 to 1.500 Nm
- Backlash-free torque transmission
- Load holding design for inclined and vertical axes available on demand
- Reliable torque limitation
- Easy torque adjustment using a graduation scale



#### EAS<sup>®</sup>-smartic<sup>®</sup>

*The installation space-optimised torque limiting clutch*

- Torque range from 2,7 to 500 Nm
- Backlash-free torque transmission
- Reliable torque limitation
- Compact dimensions
- Easy torque adjustment using a graduation scale; the torque can be read off directly

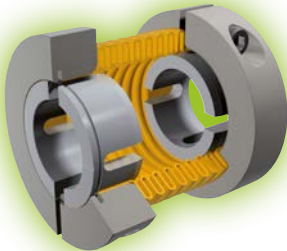


### Servo couplings

#### smartflex<sup>®</sup>

*The perfect servo coupling*

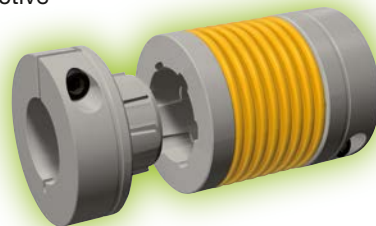
- Torques from 16 to 700 Nm
- Excellent misalignment compensation capability
- Low mass moment of inertia
- Patented, modular construction



#### primeflex<sup>®</sup>

*The first class, plug-in type steel bellows coupling*

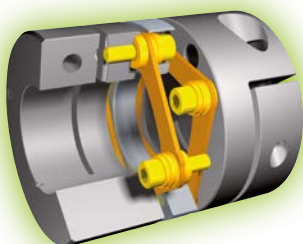
- Torques from 24 to 120 Nm
- Can be de-installed even after longer operating periods without damaging the steel bellows
- Plug-in connection
- Cost-effective



#### ROBA<sup>®</sup>-DS

*The robust disk pack coupling*

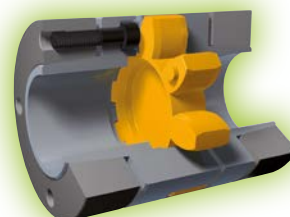
- Torques from 35 to 110.000 Nm
- Very high torsional rigidity
- Compact, with high performance density
- Extremely robust servo coupling



#### ROBA<sup>®</sup>-ES

*The damping elastomer coupling*

- Torques from 4 to 1.250 Nm
- Easy plug-in installation
- Vibration-damping
- Damping characteristics can be selected



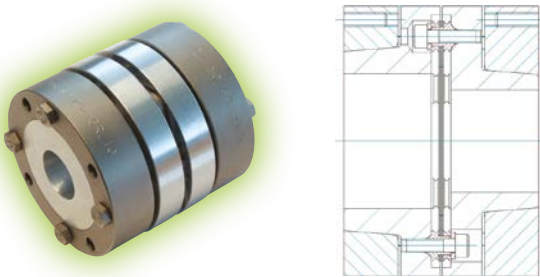
## Machine Tool Components

### Main spindle couplings (up to 20.000 rpm)

#### ROBA<sup>®</sup>-DS

*Up to 20.000 rpm*

- Torques from 35 to 110.000 Nm
- Backlash-free disk pack coupling
- Very high torsional rigidity
- Completely balanced to G 2.5
- Minimum ventilation noises



#### ROBA<sup>®</sup>-ES-P

*Up to 12.000 rpm*

- Torques from 4 to 1.250 Nm
- Backlash-free elastomer coupling
- Easy plug-in installation
- Vibration-damping

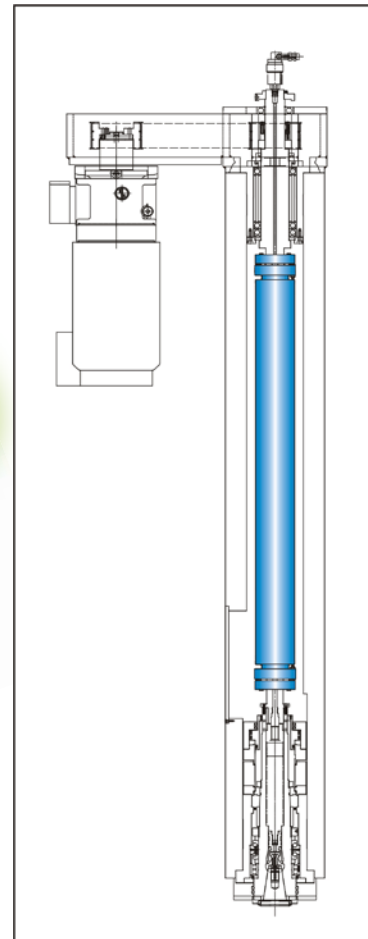


### Spindle coupling with CFRP intermediate sleeve

#### ROBA<sup>®</sup>-DS spindle coupling

*Spindle coupling with integrated cooling lubricant feedthrough*

- Designed for large machining centres
- High performance density
- High torques, high speeds
- Torsionally rigid, lightweight CFRP sleeve replaces multi-bearing intermediate shaft
- Easy installation
- Increased running smoothness



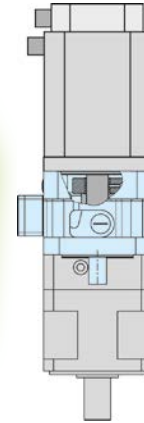
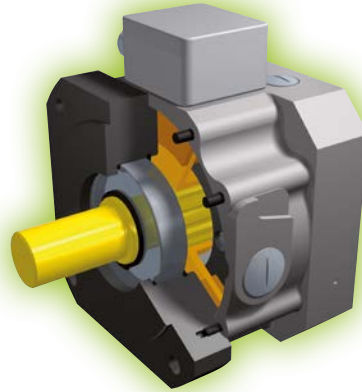
## Machine Tool Components

### Safety brakes

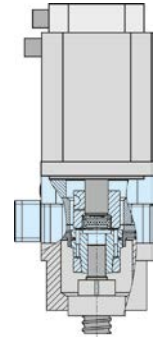
#### ROBA®-topstop®

*The modular brake system for gravity-loaded axes*

- Safe holding of the axis in any position, even with dismantled servomotor.
- Protects against all hazardous situations (acc. DIN EN ISO13849-1).
- Renders measures to support the axis during transport and maintenance superfluous.
- Can be adjusted easily for integration into existing drive units.
- Has a long service lifetime, even with frequent EMERGENCY STOP braking actions.
- Is reliable during operation due to integrated monitoring functions.



with output shaft

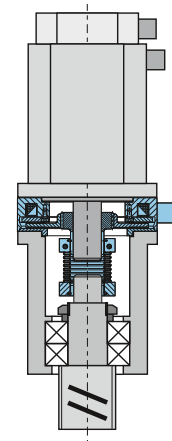


with integrated shaft coupling

#### ROBA®-alphastop®

*The cost-effective safety brake for directly driven axes*

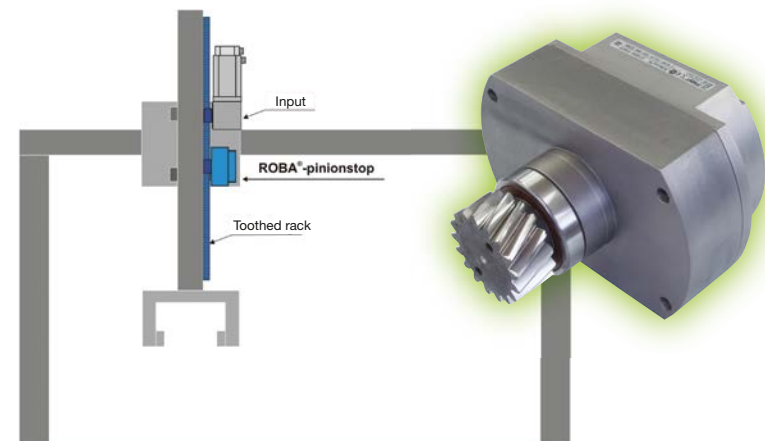
- Easy installation between servomotor and mounting flange
- Completely enclosed brake housing
- Complete unit with backlash-free shaft coupling
- Design with output shaft for mounting onto hollow shaft gearboxes
- Low mass moment of inertia
- Braking torque can be adjusted variably



#### ROBA®-pinionstop

*The safe rack and pinion brake*

- Safe holding of the axis via ready-to-install brake module with pinion shaft
- Independent, electromagnetically releasing spring applied brake system
- Integrated release monitoring
- Sealed brake housing
- Individual dimensioning and design possibilities of the brake configuration
- Easy implementation of a redundant brake system through the attachment of a second ROBA®-pinionstop brake or through the application of an additional brake on the servomotor.





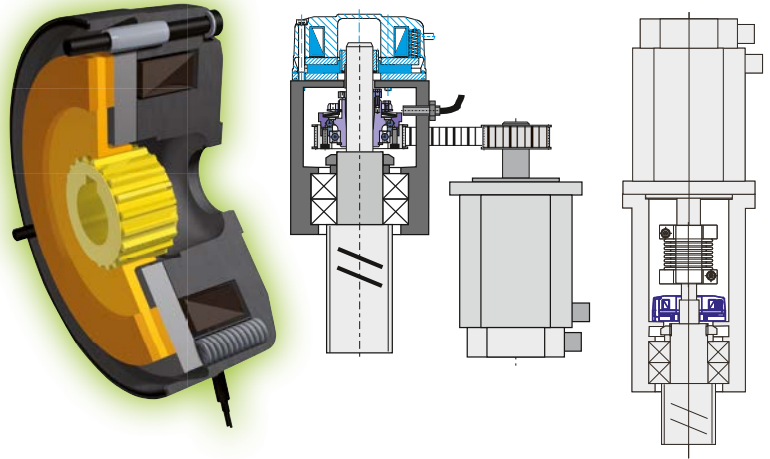
## Machine Tool Components

### Safety brakes

#### ROBA<sup>®</sup>-stop<sup>®</sup>-M

*The cost-effective safety brake*

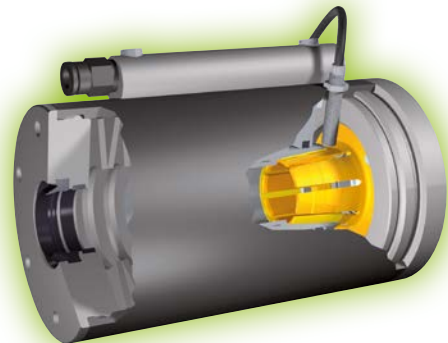
- Easy installation
- Operationally safe due to constructionally specified and inspected nominal air gap
- Completely enclosed brake housing in Protection IP 54 or IP 65
- Maintenance-free over the entire service lifetime of the rotor
- Braking torque can be adjusted variably
- Release monitoring for functional inspection
- For directly driven and belt-driven axes



#### ROBA<sup>®</sup>-linearstop

*The safety brake for linearly moved axes*

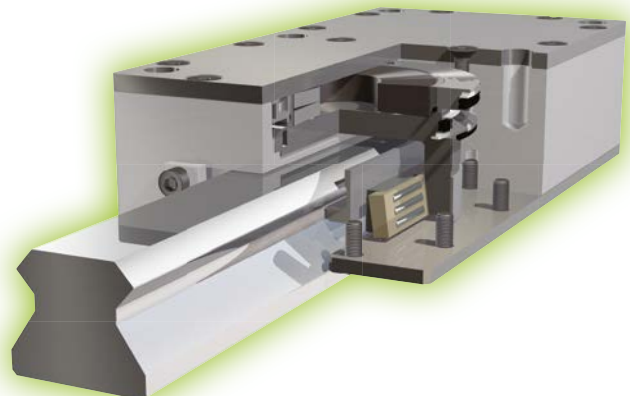
- Can be used in many different applications either as fully-fledged, dynamic safety brake or as a clamping unit
- Safety brake according to the fail-safe principle
- Backlash-free force transmission having an effect on both sides
- Clearing the clamping device is not necessary
- Maximum performance density
- Integrated switching condition monitoring possible
- Can be easily integrated into existing constructions
- Can be released pneumatically or hydraulically



#### ROBA<sup>®</sup>-guidestop

*The backlash-free brake for profiled rail guides*

- Provides maximum safety through direct clamping and redundancy
- Is fail-safe in accordance with the fail-safe principle
- Improves process accuracy
- Increases the machining performance
- Is gentle on the ball screw spindle
- Relieves the linear guide
- Reinforces the NC axis
- Fits onto standard linear guides





**Chr. Mayr GmbH + Co. KG**  
**Eichenstrasse 1, D-87665 Mauerstetten**  
**Tel.: +49 83 41/8 04-0, Fax: +49 83 41/80 44 21**  
**www.mayr.com, E-Mail: info@mayr.com**



## Service Germany

### Baden-Württemberg

Esslinger Straße 7  
 70771 Leinfelden-Echterdingen  
 Tel.: 07 11/45 96 01 0  
 Fax: 07 11/45 96 01 10

### Bavaria

Eichenstrasse 1  
 87665 Mauerstetten  
 Tel.: 0 83 41/80 41 04  
 Fax: 0 83 41/80 44 23

### Chemnitz

Bornaer Straße 205  
 09114 Chemnitz  
 Tel.: 03 71/4 74 18 96  
 Fax: 03 71/4 74 18 95

### Franken

Unterer Markt 9  
 91217 Hersbruck  
 Tel.: 0 91 51/81 48 64  
 Fax: 0 91 51/81 62 45

### Hagen

Im Langenstück 6  
 58093 Hagen  
 Tel.: 0 23 31/78 03 0  
 Fax: 0 23 31/78 03 25

### Kamen

Lünener Strasse 211  
 59174 Kamen  
 Tel.: 0 23 07/23 63 85  
 Fax: 0 23 07/24 26 74

### North

Schiefer Brink 8  
 32699 Extertal  
 Tel.: 0 57 54/9 20 77  
 Fax: 0 57 54/9 20 78

### Rhine-Main

Hans-Böckler-Straße 6  
 64823 Groß-Umstadt  
 Tel.: 0 60 78/7 82 53 37  
 Fax: 0 60 78/9 30 08 00

## Branch office

### China

Mayr Zhangjiagang  
 Power Transmission Co., Ltd.  
 Changxing Road No. 16,  
 215600 Zhangjiagang  
 Tel.: 05 12/58 91-75 65  
 Fax: 05 12/58 91-75 66  
 info@mayr-ptc.cn

### Great Britain

Mayr Transmissions Ltd.  
 Valley Road, Business Park  
 Keighley, BD21 4LZ  
 West Yorkshire  
 Tel.: 0 15 35/66 39 00  
 Fax: 0 15 35/66 32 61  
 sales@mayr.co.uk

### France

Mayr France S.A.S.  
 Z.A.L. du Minopole  
 Rue Nungesser et Coli  
 62160 Bully-Les-Mines  
 Tel.: 03.21.72.91.91  
 Fax: 03.21.29.71.77  
 contact@mayr.fr

### Italy

Mayr Italia S.r.l.  
 Viale Veneto, 3  
 35020 Saonara (PD)  
 Tel.: 0498/79 10 20  
 Fax: 0498/79 10 22  
 info@mayr-italia.it

### Singapore

Mayr Transmission (S) PTE Ltd.  
 No. 8 Boon Lay Way Unit 03-06,  
 TradeHub 21  
 Singapore 609964  
 Tel.: 00 65/65 60 12 30  
 Fax: 00 65/65 60 10 00  
 info@mayr.com.sg

### Switzerland

Mayr Kupplungen AG  
 Tobeläckerstrasse 11  
 8212 Neuhausen am Rheinfall  
 Tel.: 0 52/6 74 08 70  
 Fax: 0 52/6 74 08 75  
 info@mayr.ch

### USA

Mayr Corporation  
 4 North Street  
 Waldwick  
 NJ 07463  
 Tel.: 2 01/4 45-72 10  
 Fax: 2 01/4 45-80 19  
 info@mayrcorp.com

## Representatives

### Australia

Regal Beloit Australia Pty Ltd.  
 19 Corporate Ave  
 03178 Rowville, Victoria  
 Australien  
 Tel.: 0 3/92 37 40 00  
 Fax: 0 3/92 37 40 80  
 salesAUvic@regalbeloit.com

### India

National Engineering  
 Company (NENCO)  
 J-225, M.I.D.C.  
 Bhosari Pune 411026  
 Tel.: 0 20/27 13 00 29  
 Fax: 0 20/27 13 02 29  
 nenco@nenco.org

### Japan

MATSUI Corporation  
 2-4-7 Azabudai  
 Minato-ku  
 Tokyo 106-8641  
 Tel.: 03/35 86-41 41  
 Fax: 03/32 24 24 10  
 k.goto@matsui-corp.co.jp

### Netherlands

Groneman BV  
 Amarilstraat 11  
 7554 TV Hengelo OV  
 Tel.: 074/2 55 11 40  
 Fax: 074/2 55 11 09  
 aandrijftechniek@groneman.nl

### Poland

Wamex Sp. z o.o.  
 ul. Pozaryskiego, 28  
 04-703 Warszawa  
 Tel.: 0 22/6 15 90 80  
 Fax: 0 22/8 15 61 80  
 wamex@wamex.com.pl

### South Korea

Mayr Korea Co. Ltd.  
 Room No.1002, 10th floor,  
 Nex Zone, SK TECHNOPARK,  
 77-1, SungSan-Dong,  
 SungSan-Gu, Changwon, Korea  
 Tel.: 0 55/2 62-40 24  
 Fax: 0 55/2 62-40 25  
 info@mayrkorea.com

### Taiwan

German Tech Auto Co., Ltd.  
 No. 28, Fenggong Zhong Road,  
 Shengang Dist.,  
 Taichung City 429, Taiwan R.O.C.  
 Tel.: 04/25 15 05 66  
 Fax: 04/25 15 24 13  
 abby@zfgta.com.tw

### Czech Republic

BMC - TECH s.r.o.  
 Hvězdoslavova 29 b  
 62700 Brno  
 Tel.: 05/45 22 60 47  
 Fax: 05/45 22 60 48  
 info@bmc-tech.cz

## More representatives:

Austria, Belgium, Brazil, Canada, Denmark, Finland, Greece, Hongkong, Hungary, Indonesia, Israel, Luxembourg, Malaysia, New Zealand, Norway, Philippines, Romania, Russia, Slovakia, Slovenia, South Africa, Spain, Sweden, Thailand, Turkey

You can find the complete address for the representative responsible for your area under [www.mayr.com](http://www.mayr.com) in the internet.